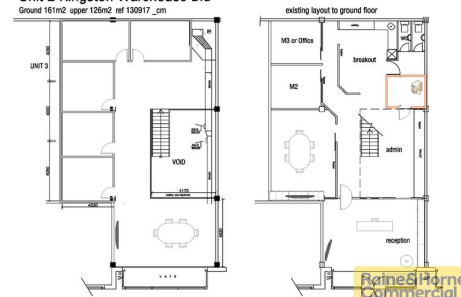




Sketch Proposal for SAAB AUST.  
Unit 2 Kingston Warehouse Bldg



**KINGSTON**  
2/71 Leichhardt Street

287 sqm

4 

## Prominent Unit in Boutique "Kingston Warehouse" Project

### Price on Application

Crafted by Euri Group, Kingston Warehouse is an exceptional project comprising 16 uniquely designed commercial units and boasting a warehouse-style layout that spans two levels: the ground floor and mezzanine.

Unit 2 is a well-presented and outfitted space boasting street frontage within the Kingston Warehouse Complex. Spanning an approximate area of 287sqm over two levels (ground floor and mezzanine), this unit offers a remarkable opportunity.


4 car bays are available for lease, with the possibility of additional spaces if desired.


For more details or to schedule viewing, please contact agents from Raine & Horne Commercial Canberra.

<b>Property ID</b>	L21135986
<b>Property Type</b>	Offices
<b>Building / Floor Area</b>	287
<b>Car Spaces</b>	4

### AGENT

**Mark Nicholls**

 0417239551

 mark.nicholls@canberra.rhc.com.au