



MARRICKVILLE
57 Railway Parade

495 sqm

3 

495m2 Industrial Building in Prime Position

Contact Agent

A rare opportunity to secure your businesses place in this exciting Inner West Industrial precinct, in arguably Marrickville's best Industrial street, with immediate access and exposure to Sydenham Train & Metro Station.


This building suits a range of business types and sizes. If your business would benefit from having presence in prime position contact us today to arrange an inspection.

- > Ground floor warehousing with first floor offices
- > Multiple roller shutters accessing the warehouse areas
- > 3 phase power and air-conditioning
- > Appealing light filled office and creative areas
- > Excellent vehicle access and street parking

Property ID	L25531906
Property Type	Industrial/Warehouse
Building / Floor Area	495
Car Spaces	3

AGENT

Dane Henrich

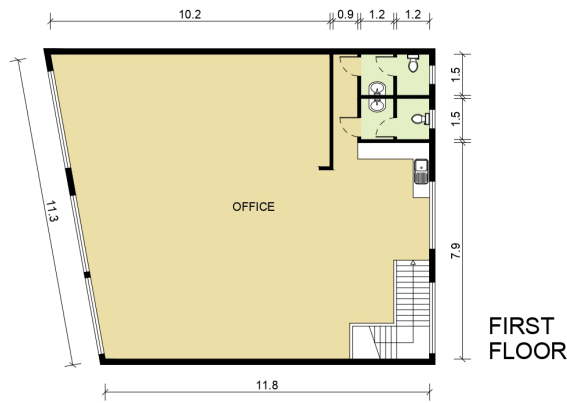
 0414 440 221

 dane.henrich@rhcss.com.au

> Direct signage visibility to Sydenham Train & Metro Station

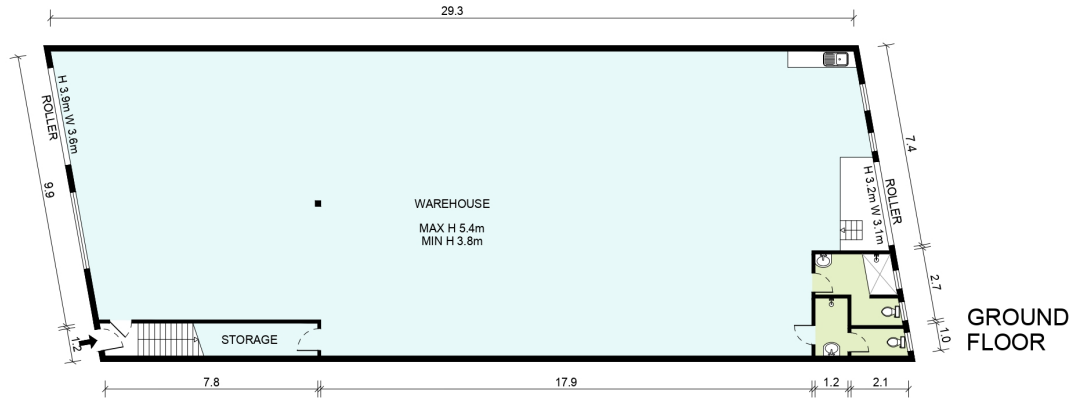
Join other dynamic and innovative businesses in this suburb that offers appealing amenity and accessibility that you will not find anywhere else. We look forward to assisting with your enquiry.

- All areas are approximate



Information Schedule

GROUND FLOOR	
Warehouse	328 m ²
Amenities	14 m ²
FIRST FLOOR	
Office	143 m ²
Amenities	10 m ²
Total Area	495 m²



Disclaimer: This plan has been prepared for marketing purposes only. Interested parties should undertake their own enquiries as to the accuracy of the information.

Plan Prepared For:

**Industrie
Property Company Pty Ltd**

MARKETING DRAWING
57 Railway Parade
MARRICKVILLE, NSW 2204

Date: 22/02/2023

Rev: 1

Scale: 1:125 at A3



Empire Plans
Maroubra Beach, NSW
E: jordan@empireplans.com.au
W: www.empireplans.com.au
M: 0402 844 843