



MARRICKVILLE
101 Railway Parade

1208 sqm

2 

1,208m2 Building Mixed Use Industrial, Entertainment, Creative Or Corporate

Contact Agent

A rare opportunity to secure your businesses place in this exciting Inner West Industrial precinct, in arguably Marrickville's best Industrial street, with immediate access and exposure to Sydenham Train Station and the upcoming Metro Railway.

This building suits a range of business types and sizes. If your business would benefit from having a presence in a prime position contact us today to arrange an inspection.


Key features of this outstanding opportunity include;

- > A mixture of both Industrial and creative areas
- > Multiple roller shutters accessing the warehouse areas with the potential to be utilised as parking.
- > 3 phase power

Property ID	L25533352
Property Type	Industrial/Warehouse
Building / Floor Area	1208
Car Spaces	2

AGENT

Dane Henrich

 0414 440 221

 dane.henrich@rhcss.com.au

- > Appealing light-filled office and creative areas

- > Excellent vehicle access and street parking

- > Direct signage visibility to Sydenham Train Station and the upcoming Metro Railway

Join other dynamic and innovative businesses in this suburb that offers appealing amenities and accessibility that you will not find anywhere else. We look forward to assisting with your enquiry.

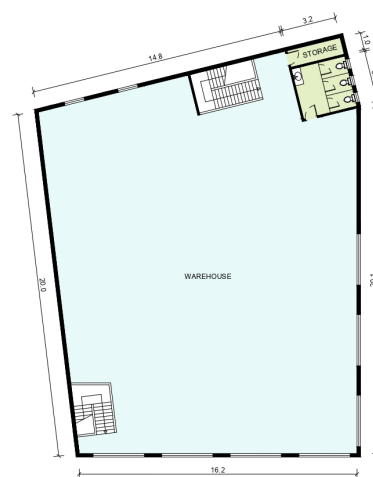
- All areas are approximate



GROUND FLOOR



FIRST FLOOR



SECOND FLOOR

GROUND FLOOR	
Warehouse	364 m ²
Office	35 m ²
Amenities	4 m ²

FIRST FLOOR

Office	382 m ²
Amenities	21 m ²

SECOND FLOOR

Warehouse	387 m ²
Amenities	15 m ²

Total Area	1208 m ²
------------	---------------------



Disclaimer: This plan has been prepared for marketing purposes only. Interested parties should undertake their own enquiries as to the accuracy of the information.

Industrie
Property Company Pty Ltd

MARKETING DRAWING
101 Railway Parade
MARRICKVILLE, NSW 2204

Scale: 1:200 at A3



Empire Plans
Maroubra Beach, NSW
E: jordan@empireplans.com.au
W: www.empireplans.com.au
M: 0402 844 843